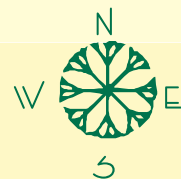
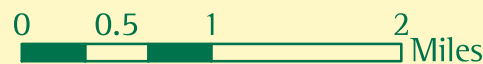
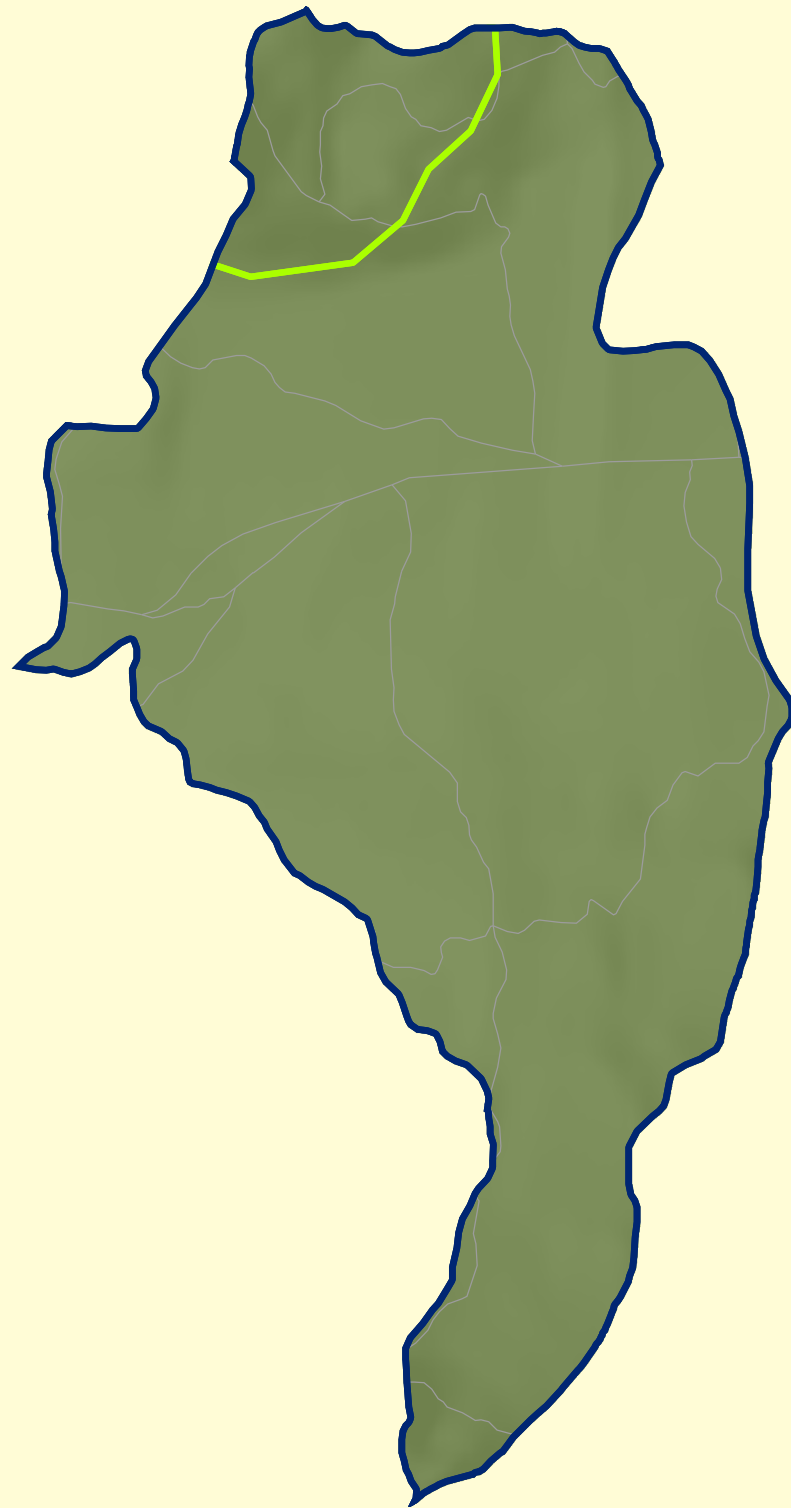


CLEARWATER RIVERS HEADWATERS



Sources: Anadromous fish distribution by ODFW and WDFW, Ownership layer from Oregon Department of Forestry, 4th and 6th field HUC from the R.E.O., IV Ecoregions from Dynamac & EPA, Roads layer by USGS, City Limit layer from SSCGIS, 303d Streams from Oregon DEQ and Wa. State Dept. of Ecology's Water Quality Program, Northern Spotted Owl and Marbled Murrelet center data from R.E.O. Ecotrust makes no express or implied warranties of the fitness or accuracy of this information.

Ecological Capital

	0	mi/mi ² of Anadromous fish habitat
	2	Distinct Ecoregions
	0	Marbled Murrelet Centers
	0	Spotted Owl Centers

Potential Threats

	0	acres are urban
	1.555	mi/mi ² of paved roads
	0	mi/mi ² of streams are 303d listed

Ownership Patterns

Acreage		
	10649.91	USFS Watershed Partners
	0	Other USFS Lands
	0	US Fish and Wildlife
	0	National Park Service
	0	Bureau of Land Management
	0	Tribal Lands
	0	Private
	0	State
	0	City
	0	County
	0	Department of Defense

Location within Drainage Basins

General Characteristics :

Parent 4th field HUC
Sub-basin name =

NORTH UMPQUA

6th field HUC ID =
171003010401

Legend

- Pacific Coast Watershed Partnership Drainage Basins
- Parent 4th field HUC Sub-basins
- 6th field watershed location within Parent 4th field HUC

