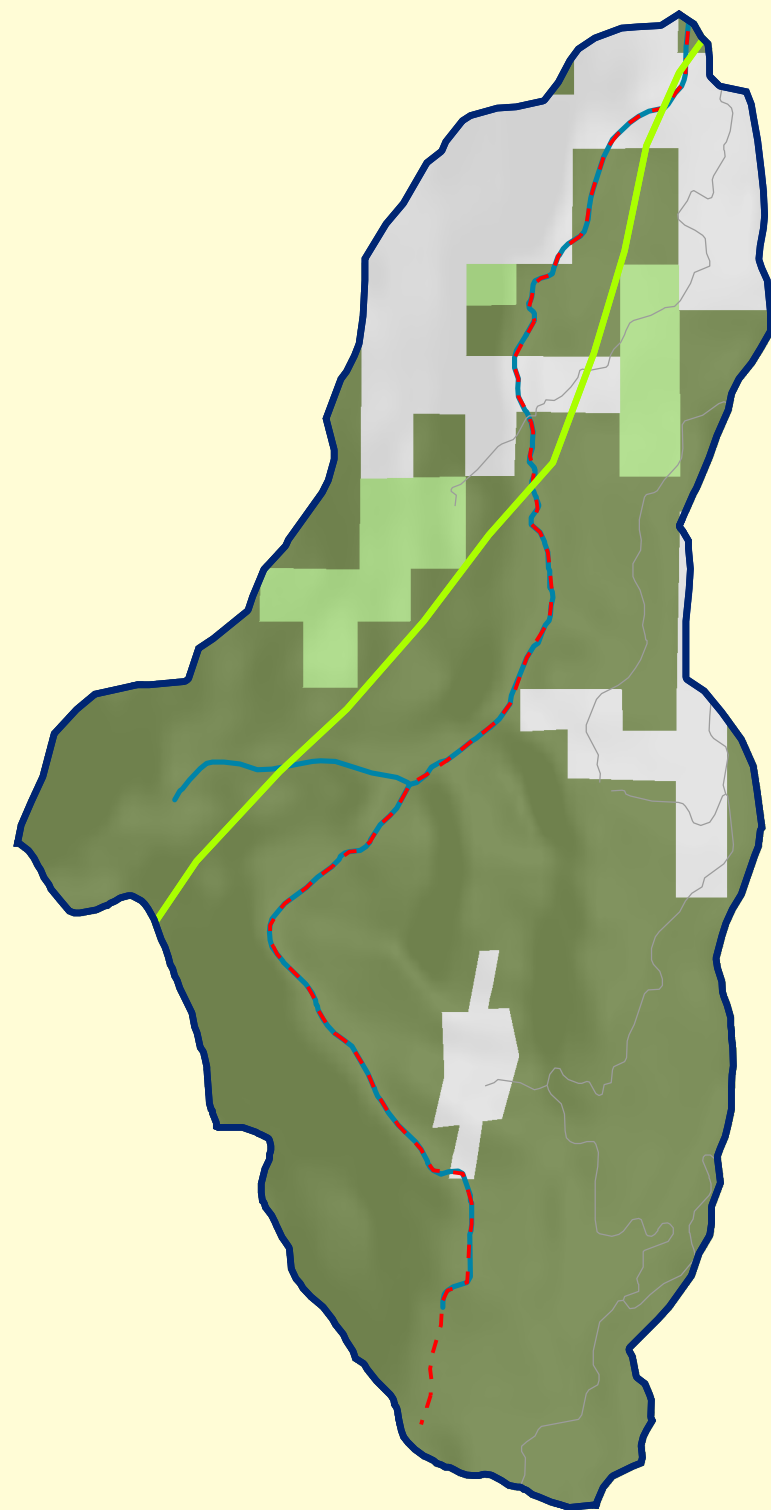


DREW CREEK



Ecological Capital

	0.606	mi/mi2 of Anadromous fish habitat
	2	Distinct Ecoregions
	0	Marbled Murrelet Centers
	0	Spotted Owl Centers

Potential Threats

	0	acres are urban
	0.929	mi/mi2 of paved roads
	0.555	mi/mi2 of streams are 303d listed

Ownership Patterns

Acreage		
	7252.59	USFS Watershed Partners
	530.87	Other USFS Lands
	0	US Fish and Wildlife
	0	National Park Service
	0	Bureau of Land Management
	0	Tribal Lands
	1808.91	Private
	0	State
	0	City
	0	County
	0	Department of Defense

Location within Drainage Basins

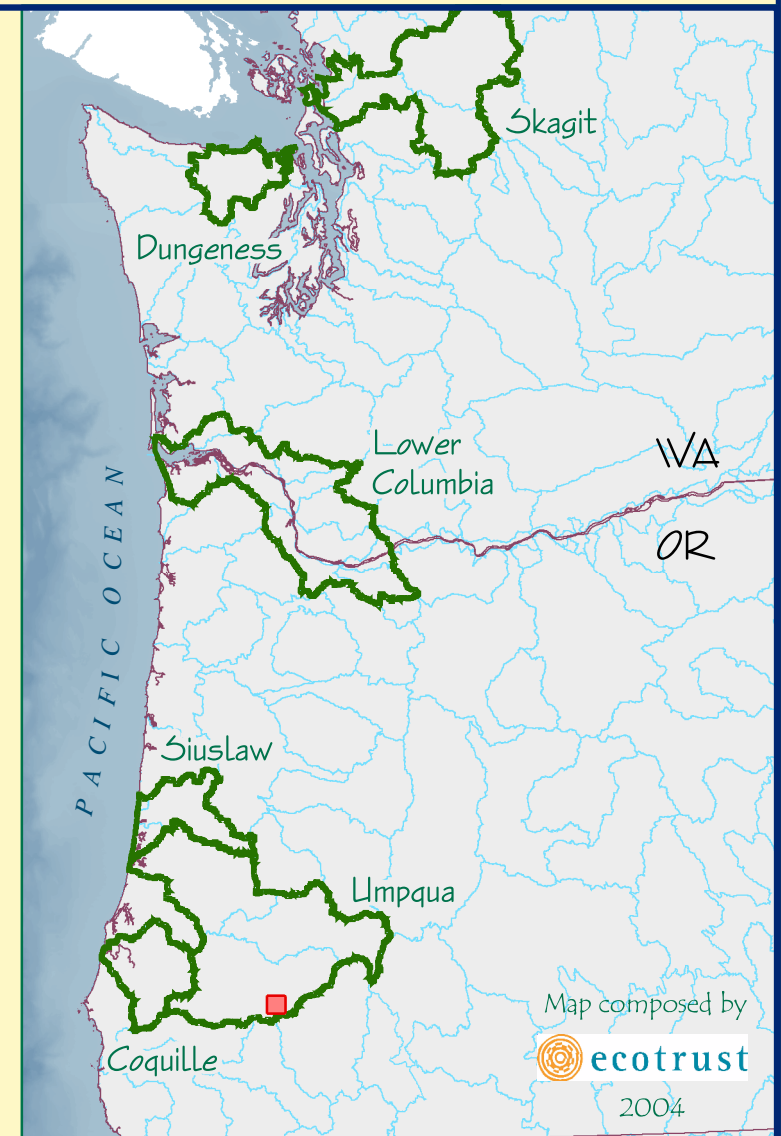
General Characteristics :

Parent 4th field HUC
Sub-basin name =
SOUTH UMPQUA

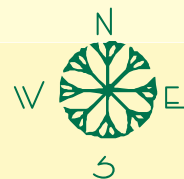
6th field HUC ID =
171003020403

Legend

- Pacific Coast Watershed Partnership Drainage Basins
- Parent 4th field HUC Sub-basins
- 6th field watershed location within Parent 4th field HUC



Sources: Anadromous fish distribution by ODFW and WDFW, Ownership layer from Oregon Department of Forestry, 4th and 6th field HUC from the R.E.O., IV Ecoregions from Dynamac & EPA, Roads layer by USGS, City Limit layer from SSCGIS, 303d Streams from Oregon DEQ and Wa. State Dept. of Ecology's Water Quality Program, Northern Spotted Owl and Marbled Murrelet center data from R.E.O. Ecotrust makes no express or implied warranties of the fitness or accuracy of this information.



Map composed by
 ecotrust
2004